

WATERCOLORS WITH HYDROCOOL®  
NICHELESS LED LIGHTS



Jandy®

COOL BY  
DESIGN



Jandy® WaterColors Nicheless LED Lights with

**HYDROCOOL**®  
Technology

TRADE SERIES  
EXCLUSIVE

# Cool by Design

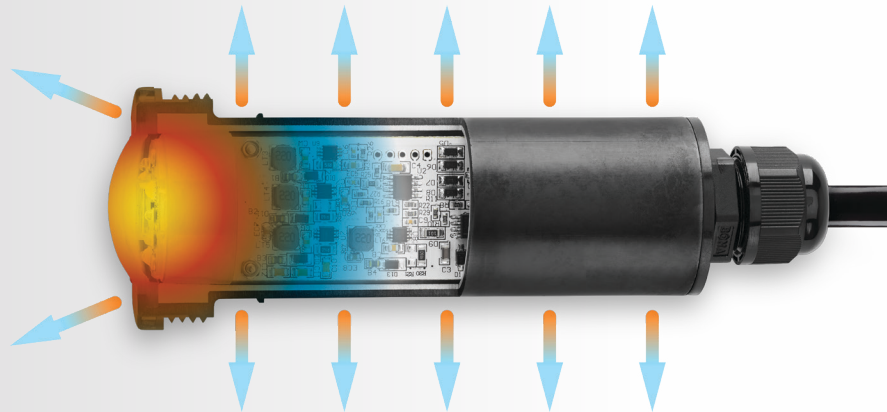
The Jandy® WaterColors Nicheless LED Lights with **HydroCool®** technology feature an innovative, energy-efficient design that runs cooler and lasts longer while providing unmatched illumination.

**HYDROCOOL®**  
Technology

## RUNS COOLER AND LASTS LONGER

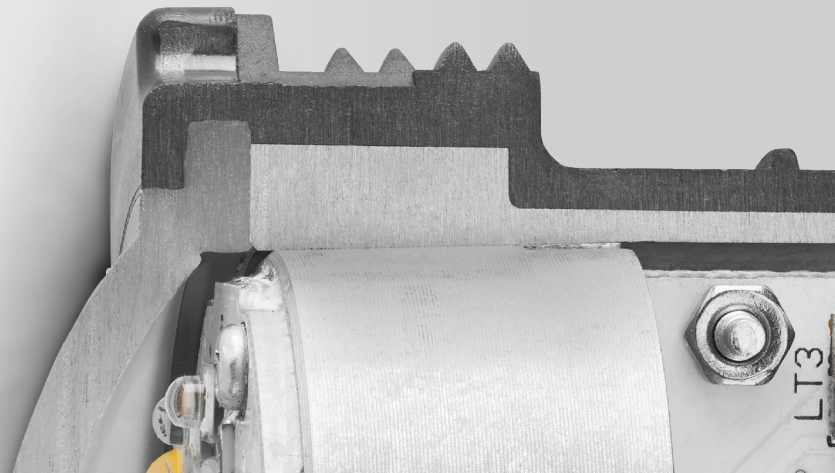
An innovative aluminum body, overmolded with thermally conductive plastic, transfers heat from the LEDs into the water ensuring that our lights run cooler and last longer.\*

\*Based on internal testing.



## BUILT TO LAST

Triple-material, unibody construction design prevents leaks and maximizes durability under water.



## A MORE EVEN GLOW

The diffuser lens provides better blending of colors for the clearest and most consistent lighting in its class.





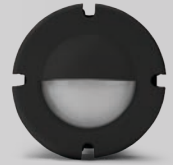
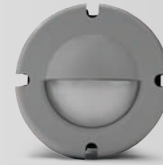
### MADE TO MATCH

Lights come standard in black with complimentary gray and white cosmetic trim ring covers to match a larger variety of pool surfaces.

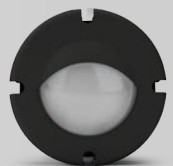
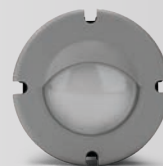
### OPTIONAL ACCESSORIES

Quarter moon and half moon lens covers eliminate reflective shadows and halos on the pool floor and help keep bright light out of swimmers' eyes in shallow areas.

Half  
Moon



Quarter  
Moon



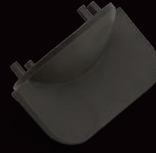
# Technical Details

## INCLUDED ACCESSORIES

Every light includes a construction cover, robust installation tool and white and gray cosmetic trim rings.



Construction Cover



Installation Tool



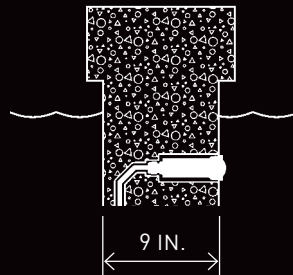
White Cosmetic Trim Ring



Gray Cosmetic Trim Ring

## SMALLER SIZE, MORE FLEXIBILITY

Up to eight inches shorter than our previous models, HydroCool® lights are only 4½" (6W) or 5½" (12W and 24W) in length to fit even the narrowest walls for ultimate design flexibility.



New HydroCool Light

Previous Models

## MULTI-COLOR AND WHITE LIGHT OPTIONS

Color options for use with all major automation systems. In addition to Daylight White (5000K), Warm White (2700K) lights provide incandescent-like lighting that conforms with Dark Sky Community requirements for CCT.



Jandy® WaterColors



P-Series



H-Series



S-Series



Warm White



Daylight White

## WATTAGE SELECTOR GUIDE

### POOL FINISH

### ILLUMINATION DISTANCE

### RECOMMENDED POWER

Color Lights ■ ■ ■ ■

White Lights ■ ■

(Watts)

Pool Finish	Pool Finish Image	ILLUMINATION DISTANCE		RECOMMENDED POWER
		Color Lights	White Lights	(Watts)
Light		Up to 12 ft	Up to 16 ft	6
		12 – 20 ft	16 – 24 ft	12
		20 ft +	24 ft +	24
Medium		Up to 10 ft	Up to 14 ft	6
		10 – 16 ft	14 – 22 ft	12
		16 ft +	22 ft +	24
Dark		Up to 8 ft	Up to 12 ft	6
		8 – 12 ft	12 – 20 ft	12
		12 ft +	20 ft +	24